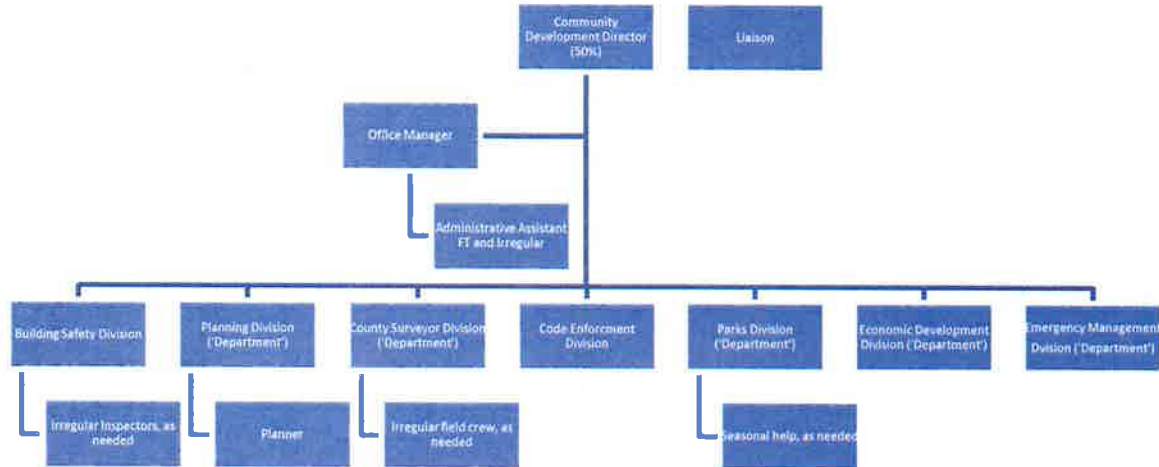


Proposed Organizational Chart  
Community Development Department  
2019



**Budget Rates:**

- Building Safety pays for Director (1/7 of 50%) and Admin Staff (40%)
- Planning pays for Director (1/7 of 50%) and Admin Staff (40%)
- County Surveyor pays for Director (1/7 of 50%) and Admin Staff (10%)
- Code Enforcement pays for Director (1/7 of 50%) and Admin Staff (5%)
- Parks pays for Director (1/7 of 50%) and Admin Staff (5%)
- Economic Development pays for Director (1/7 of 50%) and Admin Staff (5%)
- Emergency Management pays for Director (1/7 of 50%) and Admin Staff (5%)

If approved, administrative staff positions need to be reviewed. For example, Administrative Assistant Creighton should become 40 hours and and be reclassified to Operations Manager (or similar) and be responsible for all administrative oversight.